

Murundaka/Montpelier Precinct



ANDREW LUCAS

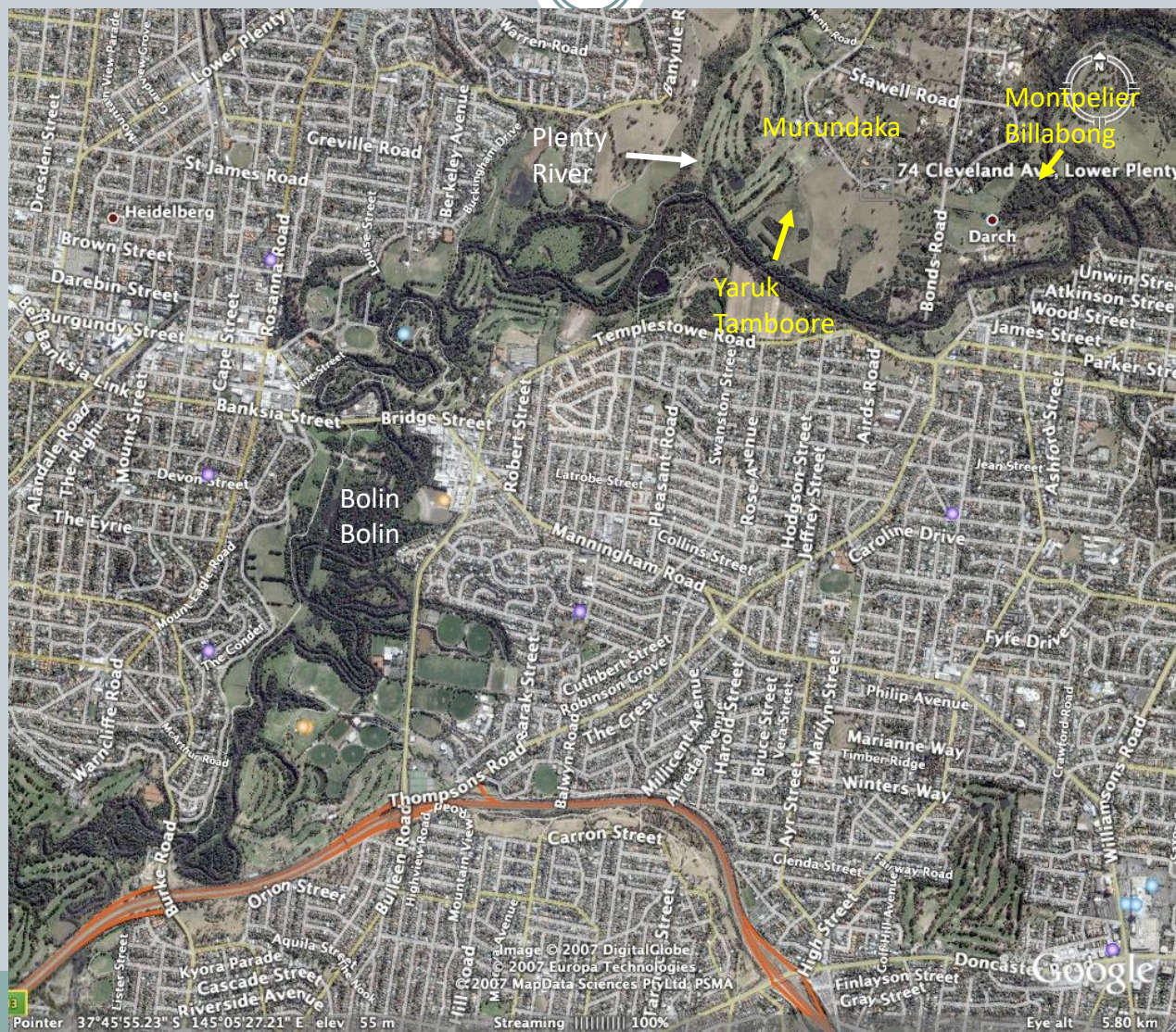
CLIVE EDINGTON

FRIENDS OF THE YARRA VALLEY PARKS

M: 0412 550 330

E: ANDREW.LUCAS@CLEVELANDAVENUE.COM.AU

Location



Yaruk Tamboore – before



Yaruk Tamboore – now



Yaruk Tamboore – now



Who we are



- Incorporated voluntary environmental group
 - Parks Victoria-recognised
- Conduct on-the-ground environmental works along the Suburban reach of the river
 - Between Plenty River to Warrandyte area
 - Including Viewbank, Murundaka, Montpelier, Tikalara Park, Reynolds Road, Sweeney's Lane, lower Plenty River environs and Candlebark Park
- Established over twenty years
 - Membership of about 40
- Volunteer Management Committee
 - \$15,000 in the bank
- Holds own Personal Accident & Public Liability insurance
- Operates own equipment
- Work with Wurundjeri



Naming



From: Doreen
Sent: Wednesday, 27 January 2010 12:01 PM
To: 'andrew.lucas@clevelandavenue.com.au'
Cc: Megan Goulding; Diane; Bill; 'info@wurundjeri.com.au'
Subject: naming of property

Dear Andrew,

At long last we have come a decision for your property.

Property Name 'Murundaka' means Stay, live at.

Wetlands Name 'Yaruk Tamboore' means Magic Waterhole

My kindest regards, Doreen.

Doreen Garvey Wandin
Project Officer
Wurundjeri Tribe Land & Compensation Cultural Heritage Council Incorporated
1st Floor Providence Building
Abbotsford Convent
1 St Heliers Street
Abbotsford VIC 3067
Mobile: 0429 961 247
Phone: 9416 2905
Fax: 9416 3095

This email together with any attachments is confidential and may be the subject of legal privilege. Please delete this email immediately if you are not the intended recipient. It is the recipients responsibility to check the email and any attached files for viruses. Thank You.

Projects



- Monthly planting activities, in conjunction with Parks Victoria, in the above areas
 - Regularly revisits prior plantings to conduct weed and rabbit eradication and maintenance activities
- Major environmental restoration activities over the last decade in the Murundaka and Montpelier areas
 - Close working relationship with Parks Victoria rangers
 - Qualified engineer responsible for on-ground project execution
- Advocates for this section of the river
 - Instrumental in Melbourne Water's \$400,000 project for environmental restoration of degraded Montpelier Billabong in 2016
- Supported a native plants nursery at the Westerfolds depot of Parks Victoria
 - Jointly managed with Cam Beardsell OAM of Parks Victoria

Site monitoring

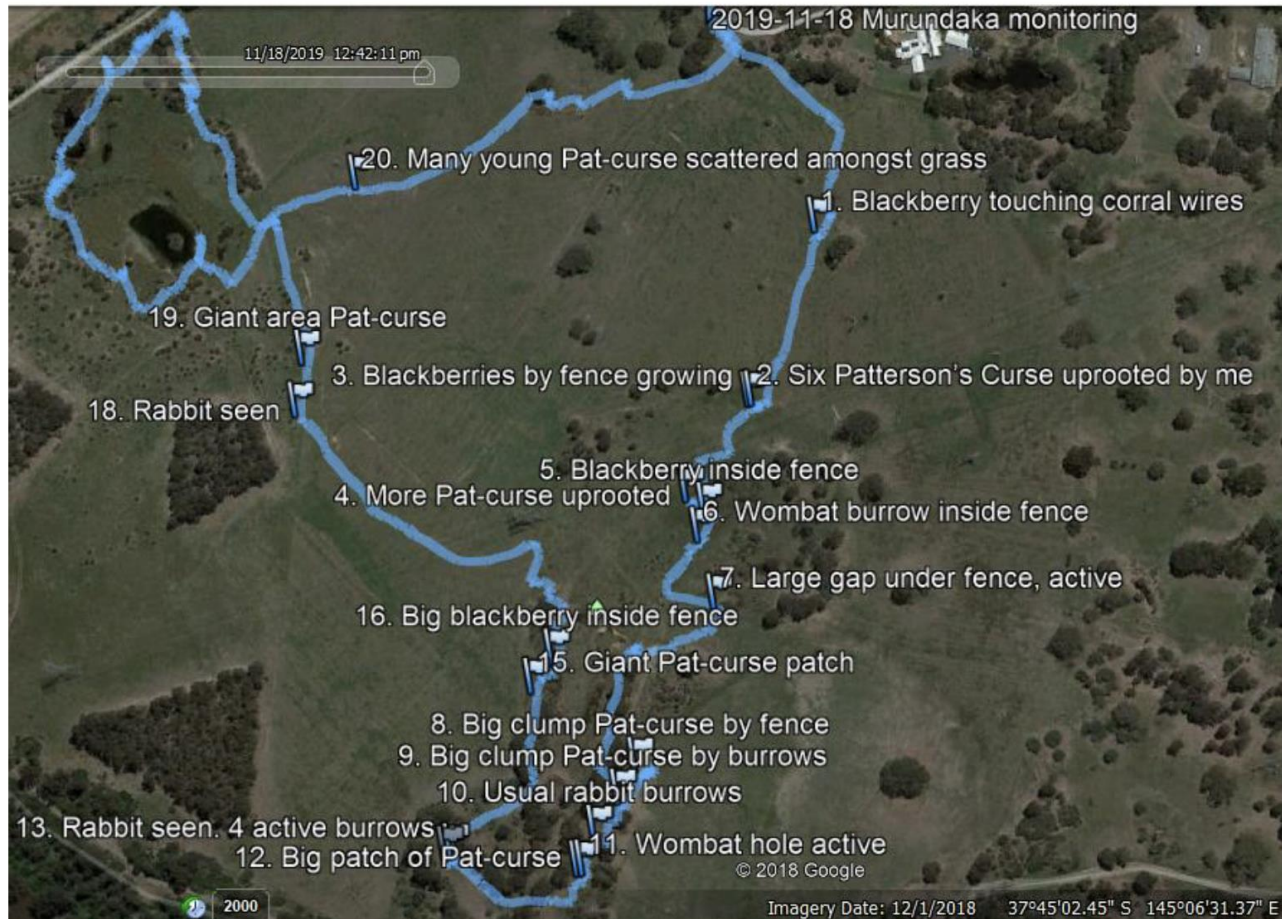


Site, date, monitor	Nature sightings	Other observations	What's been done	What needs doing
Wetland 1 (Yaruk Tamboore) & Wetland 2 (Murundaka Swamp) 10.30am-12.30pm 18/11/2019, Clive. No photo record taken. GPS track with notes is below.	<p>Fairly quiet for birds on this calm sunny day.</p> <p>Wetland 1 – No frog calls. Birds: the usual White Cockys, Magpies, Rainbow Lorikeets, Indian Minahs and Noisy minors. A rabbit was seen east of the main pool, near a previously reported burrow.</p> <p>Wetland 2 – No frog calls. Three rabbits seen by burrows as per previous reports. All the usual common birds heard/seen in the distance (white cockys, rainbows, magpies).</p>	<p>Rainfall – About average rain, but evaporation rate was double the rainfall. Rain: August (80mm vs 52 avg), September (67mm vs 55), October (25mm vs 59) and the first half of November (50mm so far, vs 75 avg for the whole month). BoM evaporation numbers were up. Totals for the 3.5 months were 222mm rain (vs 208avg) and 375mm evaporation.</p> <p>Water levels: Both wetlands had a less water compared with last August. Wetland 1 – Main pool was down quite a bit to ~30% full. Other pools were a mixture, some dry, some wet. Wetland 2 – The top pool 60% full. The fenced middle pools were noticeably down.</p> <p>Wetland 1 –The little gums in the corrals by the top gate are looking very lush, probably due to a water leak from the water trough just uphill. Scattered Thistles in the main wetland. Lots of small Patterson's Curse just starting in the top paddock. The grass in cattle paddocks is green and 20cm high. Cattle present.</p> <p>Wetland 2 – Some old rabbit burrows are active. See GPS image. Some young gums just inside & outside the middle fenced area need to be cut and painted. Blackberries by the top fence continue to grow. Around corrals tall grass is touching the electric wires – do we need to trim the grass away?</p>	<p>Wetland 1: John Williams may have been pumping water from the golf club inlet into the nearby pools. I grubbed out many thistles, but others remain.</p> <p>Wetland 2: During the 31 August working-bee we tensioned all corral wires and got the electrics working better. Yesterday I grubbed out 30+ Paterson's curse, but a couple of large patches remain.</p>	<p>Wetland 1: Fix rabbit warren by fence east of the main pool, treat nearby patch of Paterson's Curse, treat tiny Paterson's Curse in the top paddock, treat scattered blackberries. Notify cattle man of leaking drinking trough. Logs are exposed in the main pool – do we need to move any of them while the water is down?</p> <p>Wetland 2: Treat active rabbit warrens (south and east of the fenced area). Control blackberries by the north gates and scattered elsewhere. Control 2 large areas of Peterson's Curse. Remove small gums inside the fence and also just outside the fence but too close to it. Repair wombat holes in the fence around the top pool. Around corrals maybe trim tall grass from touching the wires.</p>

Monitoring of Murundaka



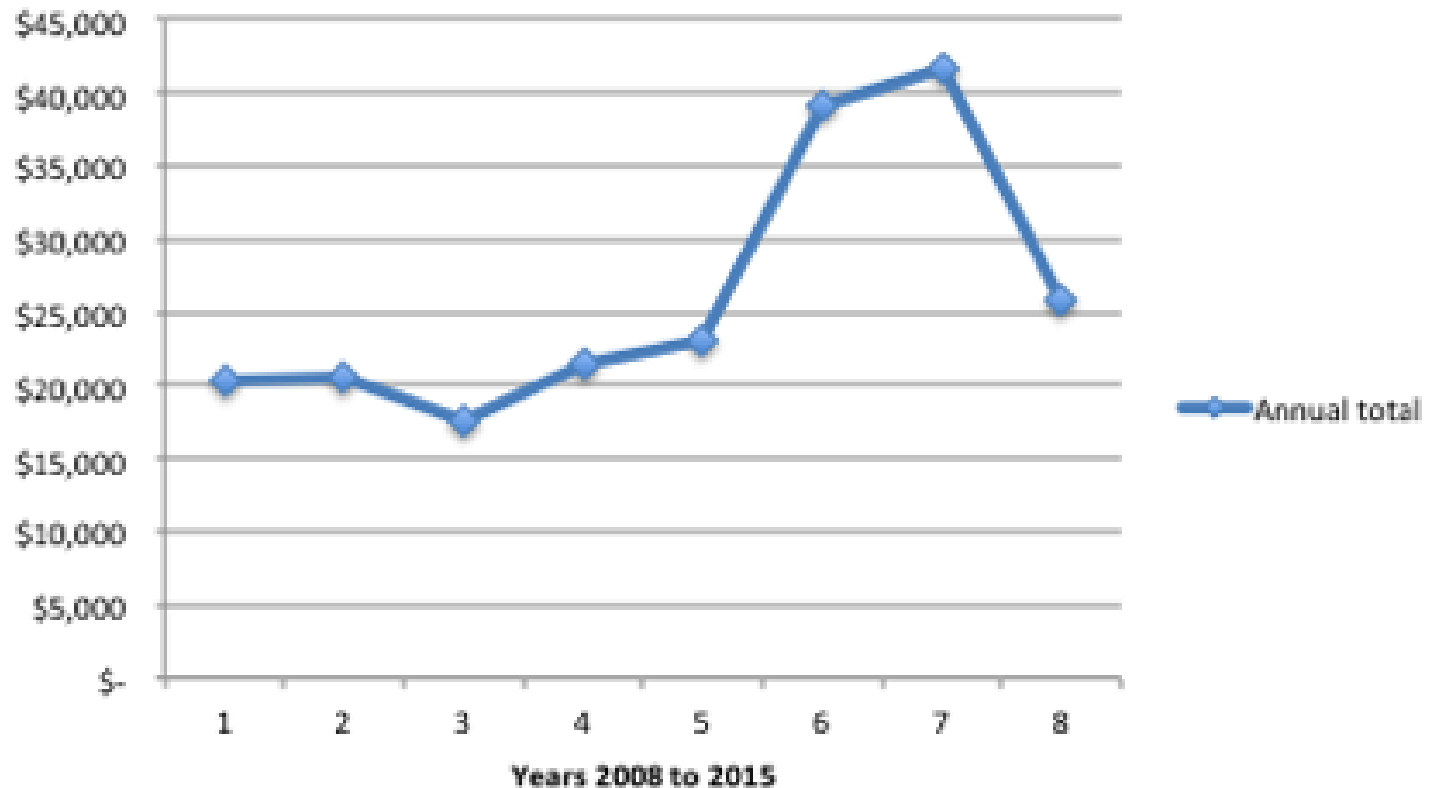
GPS track with Observations in Murundaka Wetlands 1 & 2.



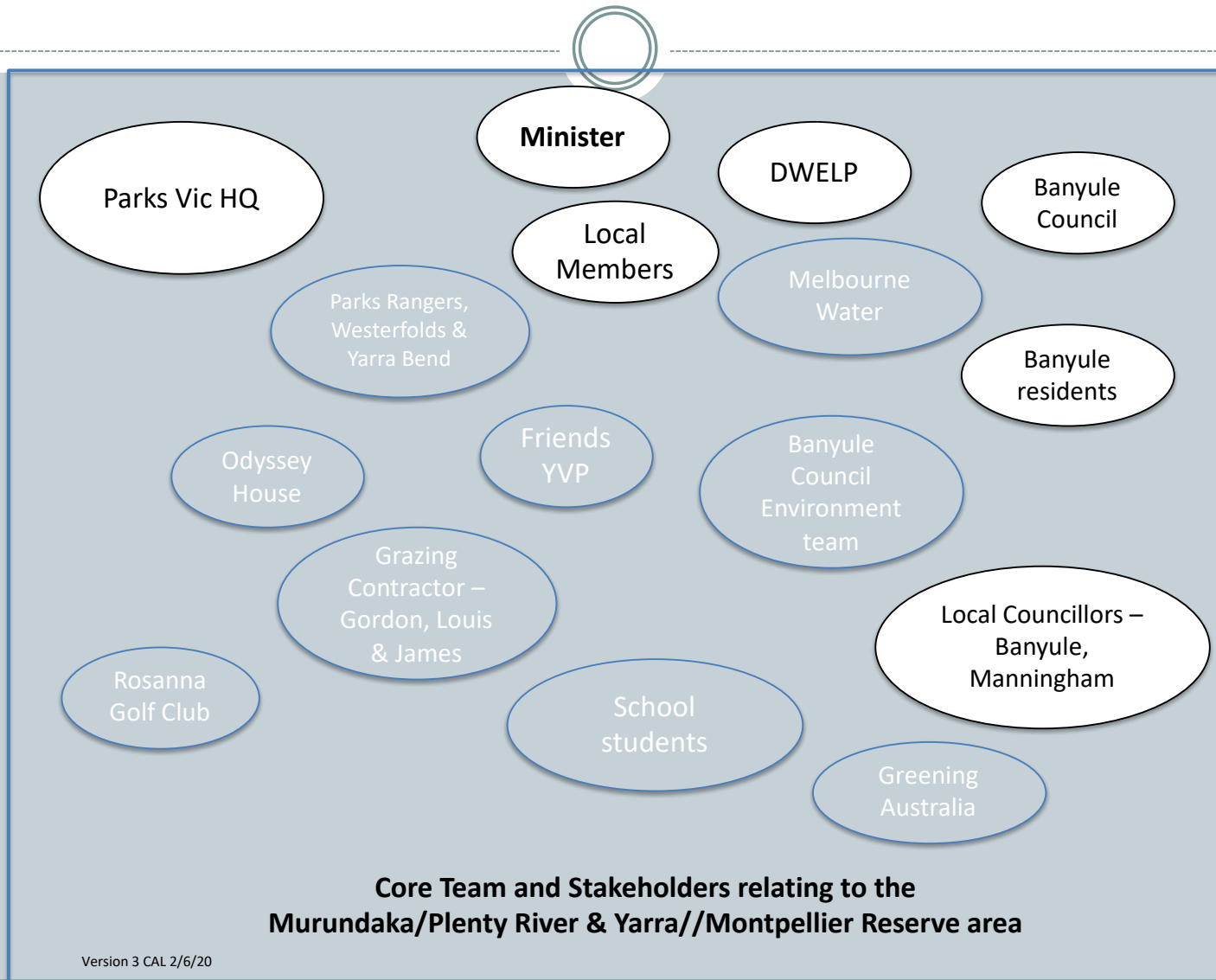
Financial support



Grant funding to Friends of YVP for Murundaka/Montpelier



Stakeholders



Comment on Part 1: Community Vision



- **Public involvement**
 - Friends acknowledge that Melbourne Water went to substantial lengths to engage with the public during the initial stages of formulating the plan
 - This is appreciated
- **However, Draft Plan “Collaborative Actions for the Next 10 Years”, (p.42) is silent on involvement & role of community**
 - Particularly Friends groups
 - Have long championed for the Yarra and made substantial improvements to it with their volunteer efforts

Comment on Part 1 continued



- “Decision-making framework”, p.45, again makes no mention of the involvement and role of Friends groups
- The Plan should specify roles and responsibilities for community and Friends groups
 - Mechanism in the Plan for Parks Victoria and Melbourne Water to nurture and support community involvement
 - Provide funding
- Enable community groups to play a key role
 - Not simply be a “bolt on” afterthought

Comment on Part 2: Land Use Framework



- → Protect the significant environmental, cultural and landscape values of the Plenty River and its confluence with the Yarra River, located within the Rosanna Golf Club site. ¶
- → Develop a masterplan for Murundaka and Montpellier wetlands to coordinate work across both sites. Enable the broader community to access and enjoy these sites through the establishment of basic visitor facilities. Work with the community to support and expand their stewardship role. ¶
- → Rehabilitate land at the Yarra River access point at Bonds Road. Remove weeds, revegetate the banks of the Yarra River and create access or viewing opportunities. ¶

- These are the subject of large projects by the Friends, with funding from Melbourne Water
- Rehabilitation effort was conceived and has been led by the Friends
 - Collaboration with Parks Victoria rangers

Comment on Part 2 continued

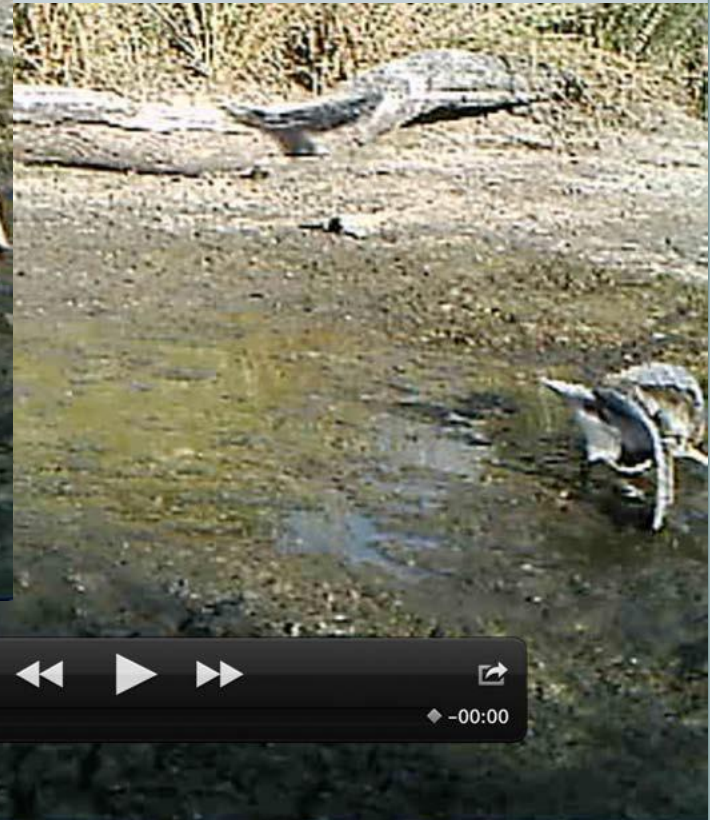
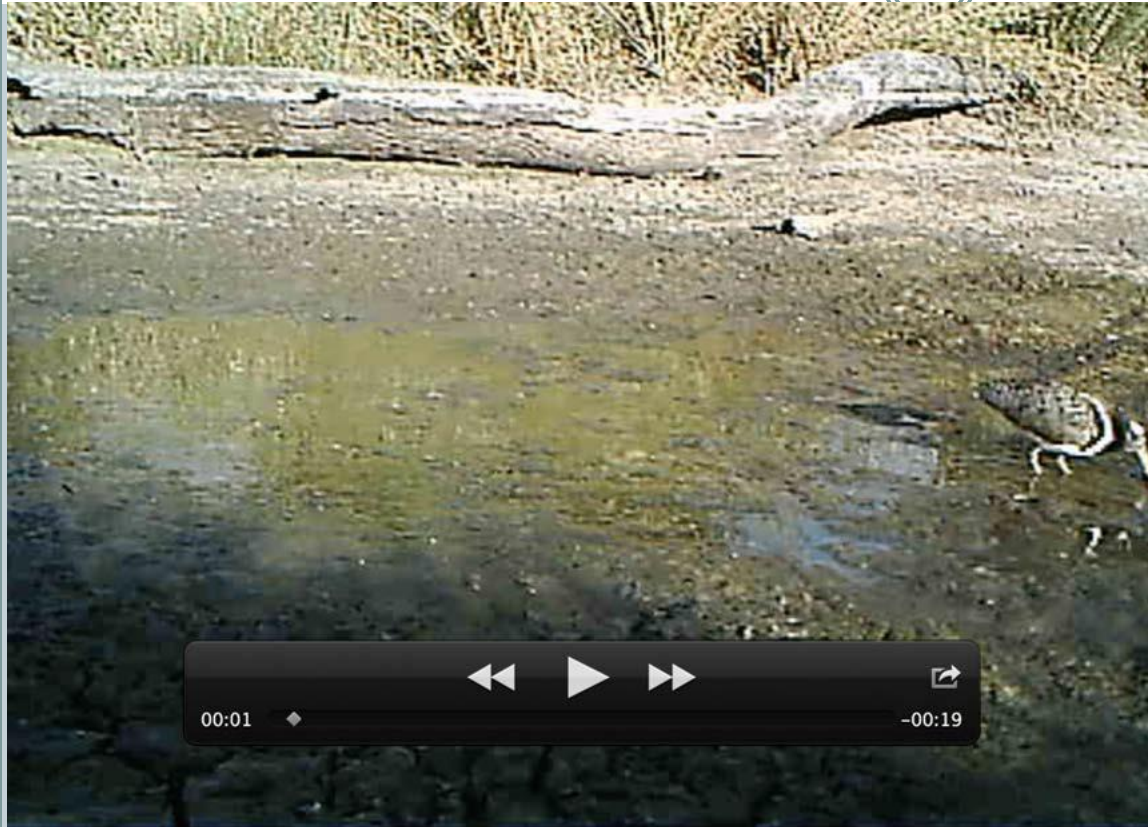


- Murundaka and Montpelier comprise a very substantial area of EVC Plains Grassy Woodland and EVC Plains Grassy Wetland
 - In the early 2000s, a haven for blackberry, rabbits, foxes and other exotic weeds such as thistle, box thorn, English hawthorn and Pattersons Curse
- Melbourne Water funding made possible initial restoration
 - Approximately 80 hectares
 - Commenced in 2007, full rehabilitation will take 15-20 years
- Major environmental improvement
 - Re-flooding of Yaruk Tamboore wetland and Murundaka swamp
 - Major reduction in the rabbit population through ripping and baiting
- Melbourne Water project to rehabilitate Montpelier Billabong complemented this effort
- Friends prepared: “5-year Strategy for Murundaka & Montpelier

Wetlands re-instatement



Painted Snipe



John Williams
Parks Victoria

Comment on Part 2 continued



- Example of how the Friends can carry out projects for much lower cost than government organisations
 - Initial rehabilitation of the Murundaka wetland involved project management, the use of heavy equipment, and an understanding of ecology
 - Successfully completed by the Friends in 2013
 - Cost of the equipment hire and contractors was around \$40,000,
 - Attention to health & safety, professionally managed, no accidents
- Most recent activity at Yaruk Tamboore
 - Re-introduction of native fish to the wetlands: southern pygmy perch, common galaxias and Australian smelt



Current situation



- Since 2016, progress has stalled
- Friends have not been in a position to lodge a grant application with Melbourne Water for the past four years
- Parks Victoria's insistence that all grant moneys provided to the Friends are surrendered to Parks Victoria *en bloc*
- Then funds disbursed at Parks' sole discretion

Consequence



- This policy prevents Friends actively managing and participating in these environmental activities
- Friends would be in breach of the undertakings given in the Friends' grant applications with Melbourne Water
 - These contractual undertakings commit the group to a providing an equivalent amount of voluntary contribution to match to funds provided by Melbourne Water
- Without resolution the community will lose interest and “walk away” from the Yarra
- Contrary to the Victorian Volunteer Strategy
 - *“The Victorian Government has committed to develop and implement a Volunteer Strategy to support and enhance volunteerism in Victoria”*

Proposal



- The Friends propose that this area of the river should function under joint management arrangements
 - Between the Friends (representing the local community), Parks Victoria and the Wurundjeri
- Reflects the statement in the Draft Plan: “*Work with the community to support and expand their stewardship role*”
- Should be reflected in the management plan for these areas of public land (which is Yarra River land)
 - Should be set out and reflected in the Land Use Framework Plan