

# Birrarrung



**June to August 2023**

Issue 2/2023

## **Newsletter of the Friends of the Yarra Valley Parks**

Incorporating Manningham Conservation Society

**Website:** [YvFriends.org.au](http://YvFriends.org.au)

**Email:** [info@YvFriends.org.au](mailto:info@YvFriends.org.au)

**President and Web:** Clive Edington Ph: 0417 705 064

**Treasurer and membership:** Joy Hick

**Newsletter editor:** Graham Patterson Ph. 9432-0163

**Postal address:** Friends of the Yarra Valley Parks,  
C/o Joy Hick, 13 Haldane Rd., Eltham Vic 3095

See the web-site for previous newsletters, and any updates to activities.

If you no longer wish to receive a printed newsletter please email us and we'll send your newsletter by email.

## **ACTIVITIES – all welcome**

Sunday Activities - **4th Sunday of the Month, 10 am to 12 Noon**, March to November.

### **WHAT TO BRING:**

*Please sign in for each activity on the Parkconnect website <https://www.parkconnect.vic.gov.au/> Morning tea will not be provided – please bring your own. Please bring your own tools and gloves if you can. If not, we will be able to provide them. You will need old clothes and sturdy shoes, a parka, or hat and sunscreen, and a water bottle. Wear long pants. You may also like to bring insect repellent.*

### **Sunday 25 June – 10 am to 12 Noon – Murundaka, Bonds Rd. Lower Plenty (Mel 33 A3)**

Planting. This site is closer to the river than where we worked recently. It is adjacent to the Main Yarra Trail. Park at the end of Bonds Road ('What3words' <https://w3w.co/care.smile.gosh> see p.4) and walk west along the Trail. At the first bend, follow the sign to the right. Bring a mattock or other planting tool if you have one.

### **Sunday 23 July – 10 am to 12 Noon – Tikalara Park, Templestowe (Mel 22 C12)**

Planting with the Yarra Riverkeepers. Park in the car park for Pettys Orchard on Homestead Road (Mel 22 A11, <https://w3w.co/rises.punchy.fault>). Make your way north to the Main Yarra Trail and follow it to the right (east) to the planting site. Bring your favorite planting tool if you have one. If not, tools will be provided.

### **Sunday 27 August – 10 am to 12 Noon – Murundaka, Bonds Rd. Lower Plenty (Mel 33 A3)**

Planting at the same site as on 25 June. Park at the end of Bonds Road and walk west along the Main Yarra Trail. At the first bend, follow the sign to the right. Bring a mattock or other planting tool if you have one.

You will be able to sign in for the activities above when they go up on ParkConnect soon.

**Committee** meetings are at 7.30 pm in the Meeting Room at Westerfolds Park (Mel 33 F1). Next meetings are Thursdays: 22 June, 27 July, 24 August.

## June and August planting

The planting site is a part of Murundaka Park, on Bonds Road beside the Main Yarra Trail. Previously farming land, most of it is covered by introduced grass species. We will be planting a range of tree and shrub species which probably would have once thrived here to form a grassy woodland. Unfortunately, regenerating indigenous grasses is in the 'too hard basket' at this stage.



Looking south across part of the planting site.

The Main Yarra Trail crosses the background of the photo

## May 28 planting at Sweeneys Flats

The day dawned grey and drizzly, and stayed that way. But an amazing team of intrepid planters turned up, and all the plants were in the ground by noon. Then we all went home to clean off the mud.



Planting understorey species in gaps between the trees



Planting Lomandras beside the wetland

Photos: Clive Edington





## Archive photo of Candlebark Park sparks reflection

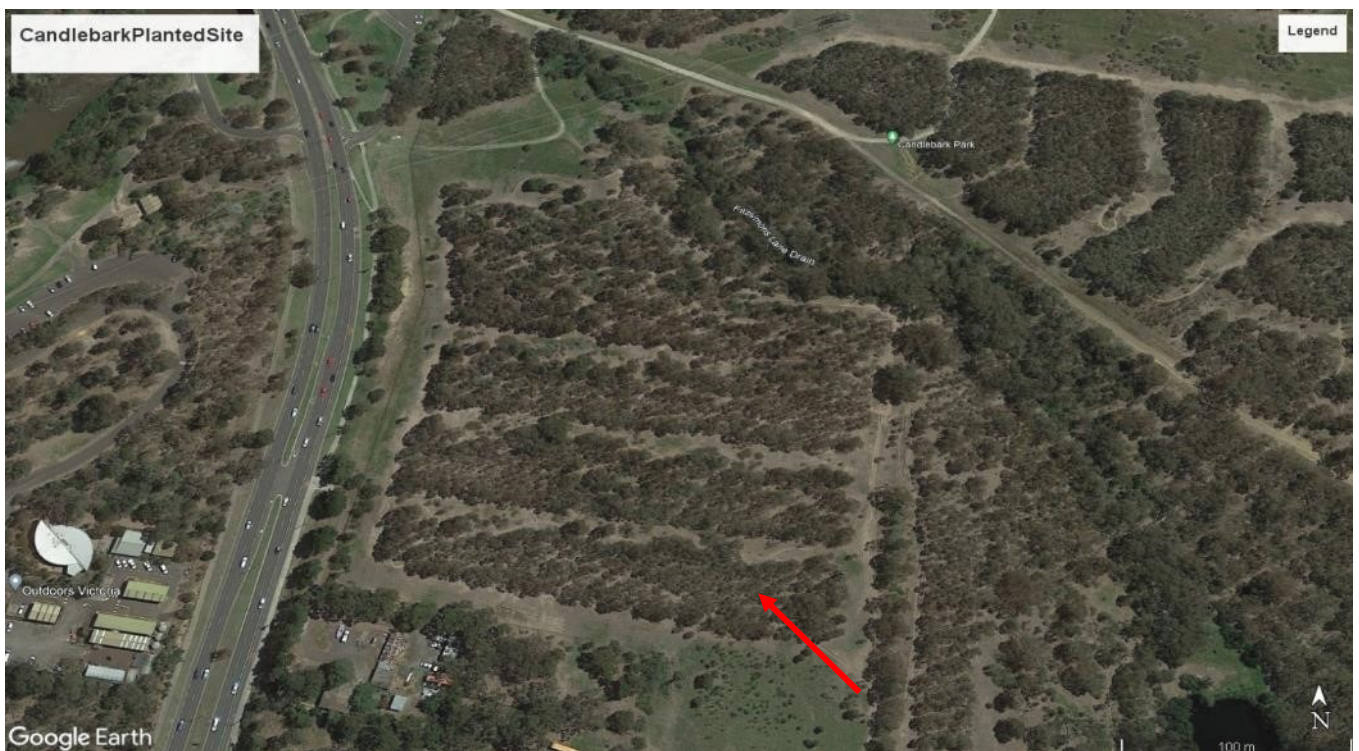
In the archives, I found the photo at left, taken in Candlebark around 2002. It shows the paddock on Fitzsimons Lane, directly south-east of the bridge. You can just see the road in the top left-hand corner.

It was a very different scene in 2023 when the next photo was taken from the same point, marked by the red arrow in the aerial image.

It is now an 'orchard', dominated by just a couple of eucalypt species. It's great for storing a lot of carbon (until the trees senesce and die). But is not very good for biodiversity of birds and insects. That would require spaces between the trees and a wider range of mid-storey and ground-storey plants.

Spaces between the trees will appear naturally in time, as weaker trees are outcompeted and die. Perhaps in time for my grand-children to see.

To hurry it up, should we get radical and remove some of the trees to create space for planting a more diverse range of smaller species? (GP)





....Further to the top picture on the previous page, I did manage to find the two fenced trees in the jungle.

The one on the left (further uphill) is hanging on, but the other has died. (GP)



### What3words

‘What3words’ is a way of specifying exact locations using a unique combination of 3 simple words. It is ideal for locations that have no street address and it is far simpler than latitude and longitude. This Friends group will be using what3words to show our planting activity meeting points. All Emergency services know about what3words so it is easy to report your location over the phone.

What3words addresses are written as 3 slashes followed by 3 short words.

e.g. The entrance from Fitzsimons Road into Westerfolds Park is `///shot.lease.statue`

e.g. The carpark for our Bonds Rd planting is `///care.smile.gosh`

If you are in your car and you want directions to go to a what3words location, type the destination what3words address into the what3words App, then click the Navigate button, and the app will ask you to choose Google Maps or Apple Maps etc. Click your choice and what3words will hand over the equivalent lat & long to your mapping app which will do your navigation.

Alternatively, if you know a location on a map and you want to find out what its what3words address is, go to the what3words App or website <https://what3words.com> and scroll its map to your desired location and then zoom in to see little squares which are individual what3words locations. Click on the square you want and you will see its what3words location displayed.

For more about what3words, either go to website <https://what3words.com> and see the tutorial on its homepage, or go to the App menus “Help & Support” > Tutorial.

(Clive Edington)

### Friends of the Yarra Valley Parks Inc.



If undeliverable, please return to:  
Friends of YVP  
C/o Joy Hick  
13 Haldane Road  
ELTHAM VIC 3095